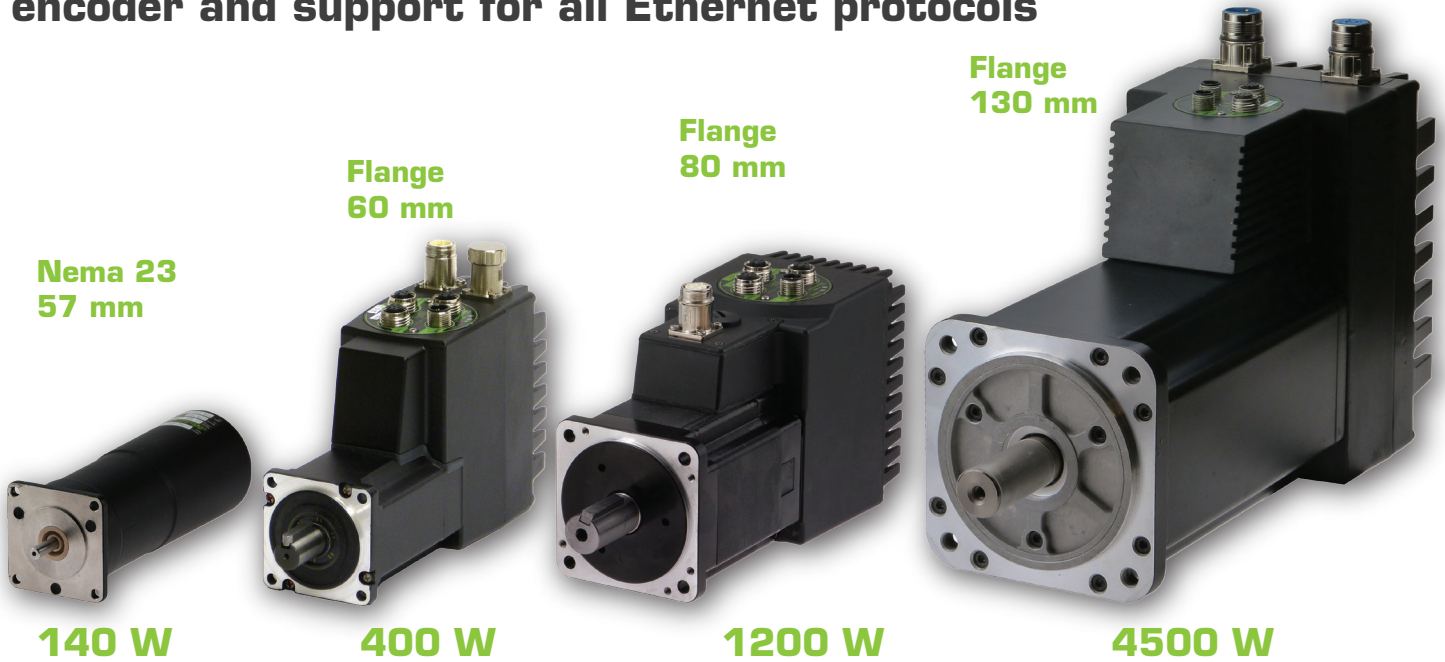




## All-in-one integrated servo motors with ePLC™, brake, multiturn encoder and support for all Ethernet protocols



EtherNet/IP™

PROFINET®  
INDUSTRIAL ETHERNET

ETHERNET  
POWERLINK

EtherCAT®

Modbus

SERCOS  
the automation bus

### Benefits of integrated motors

The benefits of integrated motors are that they do not take up space in the control cabinet, and are all-in-one units. All electronics are combined in the same metal housing for high EMC safety.

### ePLC™ embedded PLC

All JVL motors have ePLC™ built-in with up to 13 IO points. It enables <1 ms reaction times and can work together with a master PLC running Ethernet. Graphical point-n-click programming.

### Ethernet with protocol change

This unique feature gives you the flexibility to change protocol between Profinet, EtherNet/IP, Sercos, EtherCAT, Powerlink and Modbus TCP/UDP on any JVL motor. It is easy with JVL's MacTalk® software.

CANopen®

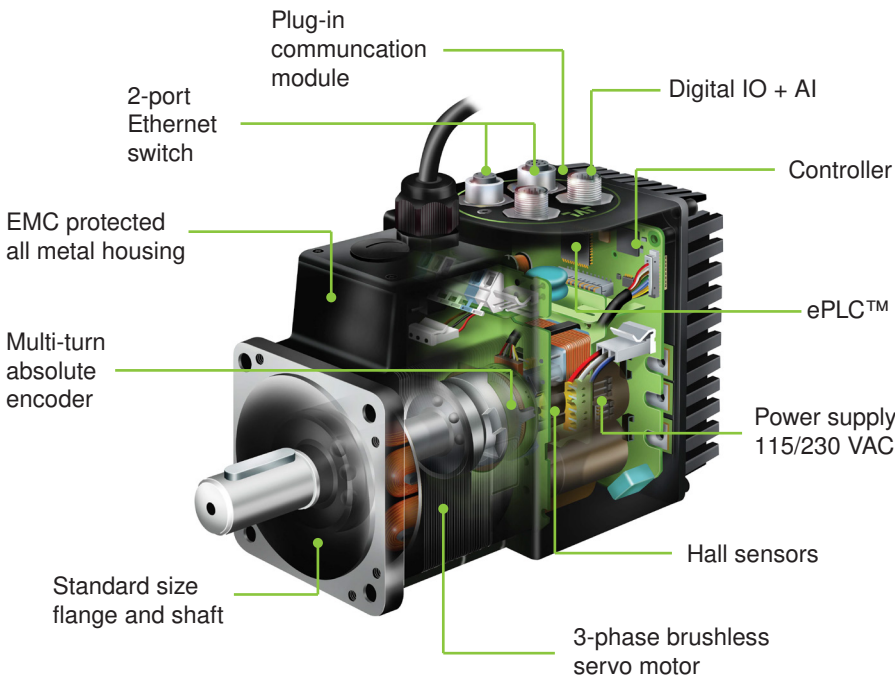
IO-Link  
Universal · Smart · Easy



ePLC  
RS232



Technology Partner  
A ROCKWELL AUTOMATION PARTNER



JVL A/S is a Danish manufacturer founded in 1986 and is the inventor of the integrated servo motor concept. Our focus is on developing state-of-the-art products for motion control. We are proud to be a certified supplier to the aerospace and automotive industries.

We offer two all-in-one ranges: Servo motors from 50 to 4500 W and ServoStep™ motors from 0.36 to 25 Nm. All motors are designed for IIot and are Industry 4.0 ready.



# JVL – your global partner

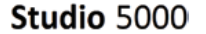


JVL A/S is a Danish company with subsidiaries in Germany, UK, USA and Turkey. We have distributors and partner companies in more than 30 countries world-wide – sales and support are always nearby.

	DC			New					Planned	
	MAC050-A	MAC095-A	MAC140-A	MAC083-L	MAC140-F	MAC141-F	MAC320-L	MAC402-D	MAC802-D	Unit
Technical specifications										
Supply voltage	12-48 VDC									
Speed range (nominal)	0-4000	0-4000	0-4000	0-4000	0-4000	0-2700	0-4000	0-3000	0-3000	RPM
Rated power	46	92	134	83	134	134	320 S3	400	800	Watt
Torque	0.11 (15.6)	0.22 (31.2)	0.32 (45.3)	0.20 (28.3)	0.32 (45.3)	0.48 (68)	0.8 (113.3)	1.28 (184.1)		Nm (oz-in)
Peak torque	0.32 (45.3)	0.62 (88)	0.9 (127.5)	0.6 (85)	0.9 (127.5)	1.59 (225.2)	2.4 (339.9)	3.8 (538)	6.8 (963)	Nm (oz-in)
Rotor inertia	0.075 (0.0010)	0.119 (0.0017)	0.173 (0.0025)	0.075 (0.0010)	0.173 (0.0025)	0.227 (0.0032)	0.227 (0.0032)	0.34 (0.0048)		kgcm <sup>2</sup> (oz-in-s <sup>2</sup> )
Encoder resolution (std.)	4096	4096	4096	8192	8192	4096	8192	8192	8192	CPR
Abs. encoder (Single/Turns)	-	-	-	8192 ±262143	8192 ±262143 rev	8192 ±262143 rev	8192 ±262143 rev	8192 ±8178 rev	8192 ±8178 rev	CPR ±rev.
Dimensions WxHxL [mm]	57.7x57.7x111	57.7x57.7x131.5	57.7x57.7x150.5	57.7x57.7x111	57.7x57.7x150.5	57.7x57.7x172	57.7x57.7x176.4	63x115x191		mm
Dimensions WxHxL [inch]	2.27x2.27x4.37	2.27x2.27x5.18	2.27x2.27x5.93	2.27x2.27x4.37	2.27x2.27x5.93	2.27x2.27x6.77	2.27x2.27x5.93	2.48x4.53x7.52		inch
Length with brake	Optional external brake: MAB23X +54 (2.26)							224 (8.82)		mm (inch)
Flange	57.7x57.7 (2.27x2.27) NEMA23							60x60 (2.36x2.36)	80x80 (3.15x3.15)	mm (inch)
Shaft	Ø6.35 (0.25)	Ø6.35 (0.25)	Ø6.35 (0.25)	Ø6.35 (0.25)	Ø6.35 (0.25)	Ø6.35 (0.25)	Ø8 (0.xx)	Ø14 (Ø0.55)	Ø19 (Ø0.75)	mm (inch)
Weight w/o module	0.55 (1.21)	0.83 (1.83)	1.1 (2.43)	0.55 (1.21)	1.1 (2.43)	1.32 (2.91)	1.1 (2.43)	2.05 (4.52)		kg (lb)
Weight with brake	-	-	-	-	-	-	-	2.5 (5.51)		kg (lb)
Protection class	IP42 (IP67 Optional +5mm increased L)							IP55 (IP66 Optional)		

	AC						
	MAC400-D	MAC800-D	MAC1200-D	MAC1500-D	MAC3000-G	MAC4500-G	Unit
Technical specifications							
Supply voltage	115/230 VAC	115/230 VAC	115/230 VAC	3x400	3x400	3x400	VAC
Speed range (nominal)	0-3000	0-3000	0-3000	0-3000	0-3000	0-3000	RPM
Rated power	400	746	1182	1500	3000	4500	Watt
Continuous torque	1.28 (184.1)	2.38 (337.1)	3.82 (538.1)	4.78 (677)	9.55 (1352.4)	14.3 (2025)	Nm (oz-in)
Peak torque	3.8 (538)	6.8 (963)	11.46 (1614)	15 (2025)	28.6 (4050)	52.3 (7406)	Nm (oz-in)
Rotor inertia	0.34 (0.0048)	0.91 (0.0129)	1.6 (0.0225)	13.96 (0.0886)	27.83 (0.1719)	27.83 (0.394)	kgcm <sup>2</sup> (oz-in-s <sup>2</sup> )
Encoder resolution (std.)	8192	8000/8192	8000/8192	8192	8192	8192	CPR
Abs. encoder (Single/Turns)	8192 ±8178 rev	8192 ±8178 rev	8192 ±8178 rev	8192 ±8178 rev	8192 ±8178 rev	8192 ±8178 rev	CPR ±Rev
Dimensions WxHxL [mm]	63x115x191	84x120x174	84x120x203	134x205x250	134x205x330	134x205x330	mm
Dimensions WxHxL [inch]	2.48x4.53x7.52	3.31x4.72x6.85	3.31x4.72x7.99	5.28x8.07x9.84	5.28x8.07x12.99	5.28x8.07x13	inch
Length with brake	224 (8.82)	209 (8.23)	239 (9.41)	306 (12.05)	391 (15.39)	391 (15.39)	mm (inch)
Flange	60x60 (2.36x2.36)	80x80 (3.15x3.15)		130x130 (5.12x5.12)			mm (inch)
Shaft	Ø14 (Ø0.55)	Ø19 (Ø0.75)	Ø19 (Ø0.75)	Ø24/0.94	Ø24 (Ø0.94)	Ø24 (Ø0.94)	mm (inch)
Weight w/o module	2.3 (5.07)	2.9 (6.39)	4.0 (8.82)	10.2 (22.49)	17.0 (37.48)	18.63 (41.07)	kg (lb)
Weight with brake	2.8 (6.17)	3.7 (8.16)	5.0 (11.02)	13.2 (29.1)	20 (44.09)	21.63 (47.63)	kg (lb)
Protection class	IP55 (IP66 optional)						

Software integration:



Plug-in module



	MAC motor® Plug-in modules									
	MAC00-EI4	MAC00-EP4	MAC00-EC4	MAC00-EM4	MAC00-ES4	MAC00-EL4	MAC00-FC41	MAC00-B41	MAC00-B42	MAC00-EW4
Protocol	EtherNet/IP	Profinet	EtherCAT	Modbus TCP/UDP	Sercos	Powerlink	CANopen	Serial	Serial	WiFi
Part number	MAC00-EI4	MAC00-EP4	MAC00-EC4	MAC00-EM4	MAC00-ES4	MAC00-EL4	MAC00-FC41	MAC00-B41	MAC00-B42	MAC00-EW4
Ethernet switch ports	2 ports						-	-	-	-
IO	1DI + 1DO + 1AI						4IO	6IO 2AI Enc. I/O	8DI 4DO 1AI	4DI 4DO 1AI
Specs	CIP / DLR	Profinet IO	CANopen	TCP/IP or UDP/IP	Line, Ring	CANopen	DSP402	RS485/RS232	RS485/RS232	802.11b/g
Extended IO Part number	MAC00-E41	MAC00-EP41	MAC00-EC41	MAC00-EM41	MAC00-ES41	MAC00-EL41				
Extended IO	4DI + 2DO + 2AI									



# ServoStep®

## All-in-one integrated stepper motors with closed-loop, ePLC, multiturn encoder and support for all Ethernet protocols

**NEMA 17**  
(42 mm)



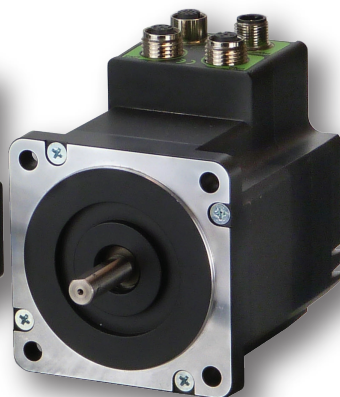
**0.8 Nm**

**NEMA 23**  
(57 mm)



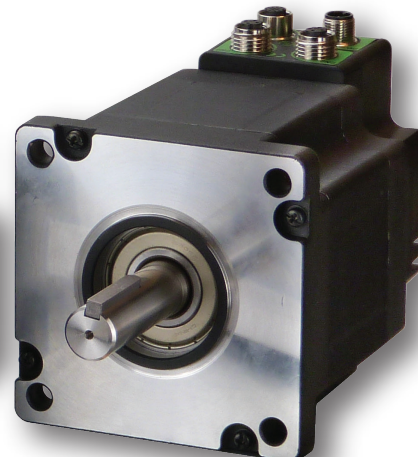
**3 Nm**

**NEMA 34**  
(87 mm)



**12 Nm**

**NEMA 43**  
(110 mm)



**25 Nm**



### Benefits of integrated motors

The benefits of integrated motors are that they do not take up space in the control cabinet, and are all-in-one units. All electronics are combined in the same metal housing for high EMC safety.

### ePLC™ embedded PLC

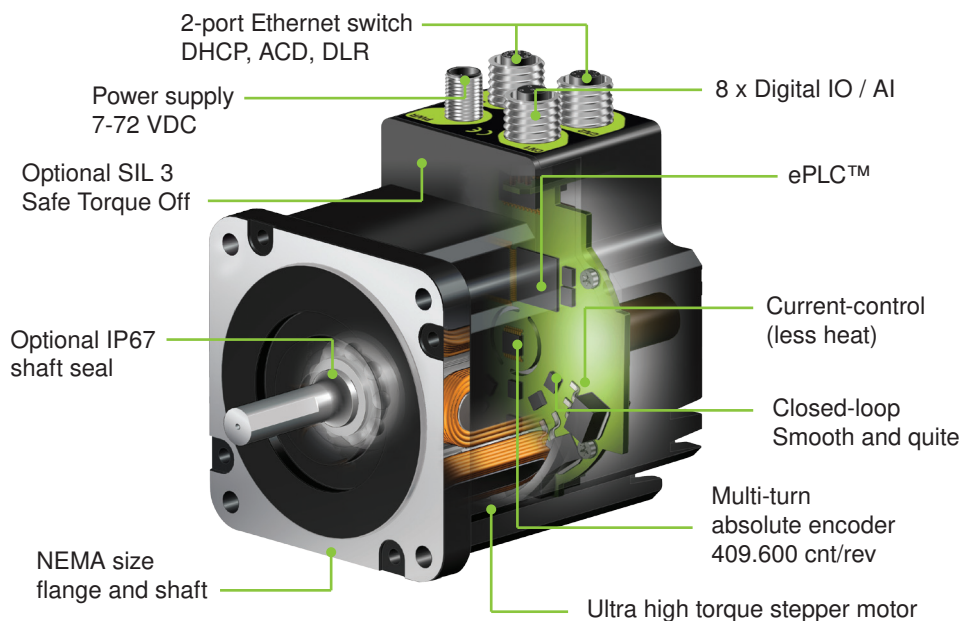
All JVL motors have ePLC™ built-in with up to 8 IO points. It enables <1 ms reactions times and can work together with a master PLC running Ethernet. Graphical point-n-click programming.

### Ethernet with protocol change

This unique feature gives you the flexibility to change protocol between Profinet, EtherNet/IP, Sercos, EtherCAT, Powerlink and Modbus TCP/UDP on any JVL motor. It is easy with JVL's MacTalk® software.



Technology Partner  
A ROCKWELL AUTOMATION PARTNER



JVL A/S is a Danish manufacturer founded in 1986 and is the inventor of the integrated servo motor concept. Our focus is on developing state-of-the-art products for motion control. We are proud to be a certified supplier to the aerospace and automotive industries. We offer two all-in-one ranges: Servo motors from 50 to 4500 W and ServoStep™ motors from 0.18 to 25 Nm. All motors are designed for IIot and are Industry 4.0 ready.



# JVL – your global partner



JVL A/S is a Danish company with subsidiaries in Germany, UK, USA and Turkey. And we have distributors and partner companies in more than 30 countries world-wide – sales and support are always nearby.

## NEMA 17 NEMA 23



Main motor type*	MIS171	MIS173	MIS176	MIS231S	MIS232S	MIS234S	MIS231T	MIS232T	SMC66	
Holding torque	0.18 [25]	0.40 [56]	0.78 [110]	0.97 [137]	1.97 [279]	3.08 [462]	1.16 [164]	2.53 [358]	6 A	Nm [Oz-In]
Resolution	409600	409600	409600	409600	409600	409600	409600	409600	409600	Counts per rev.
Supply voltage Driver	7-72	7-72	7-72	7-72	7-72	7-72	7-72	7-72	7-72	VDC
Supply: Control + I/O	7-28	7-28	7-28	7-28	7-28	7-28	7-28	7-28	7-28	VDC
Max supply current Driver @24 / 48 / 72 VDC	2.9 / 2.0 / 1.3	3.3 / 3.2 / 2.7	2.8 / 3.0 / 3.2	5.1 / 5.2 / 5.1	4.4 / 4.6 / 4.8	3.5 / 4.1 / 4.1	6.7 / 6.3 / 5.6	5.9 / 6.1 / 6.2	6.7 / 6.3 / 6.2	ADC RMS
Nominal speed range	0.01 - 3000	0.01 - 3000	0.01 - 3000	0.01 - 3000	0.01 - 3000	0.01-3000	0.01-3000	0.01-3000	0.01 - 3000	RPM
Max mechanical power**	100	142	135	177	221	212	198	316		W
Rotor inertia	0.02 [0.0003]	0.054 [0.0008]	0.1 [0.00144]	0.3 [0.0042]	0.48 [0.0068]	0.65 [0.0092]	0.3 [0.0042]	0.48 [0.0068]		kg-cm <sup>2</sup> /oz-in-s <sup>2</sup>
Flange dimensions	42x42 [1.7]	42x42 [1.7]	42x42 [1.7]	57x57 [2.3x2.3]	57x57 [2.3x2.3]	57x57 [2.3x2.3]	57x57 [2.3x2.3]	57x57 [2.3x2.3]	42x109	mm [Inch]
Length	73.5 [2.89]	85.2 [3.35]	106 [4.17]	103 [4.06]	124 [4.88]	161 [6.34]	103 [4.06]	124 [4.88]	59.5	mm [inch]
Shaft diameter***	Ø5 [0.197]	Ø5 [0.197]	Ø8 [0.315]	Ø6.35 [0.25]	Ø6.35 [0.25]	Ø10[0.3937]	Ø6.35 [0.25]	Ø10[0.3937]		mm [inch]
Weight	0.54 [1.19]	0.68 [1.50]	0.90 [1.98]	1.1 [2.43]	1.4 [3.09]	2.0 [4.41]	1.1 [2.43]	1.4 [3.09]	0.40 [0.88]	kg [lb]
Protection class	IP42 (IP65 Optional)									

\* Rear end connectors available      \*\* Peak power @ 72 VDC      \*\*\* Other shaft types also available

## NEMA 34 NEMA 43



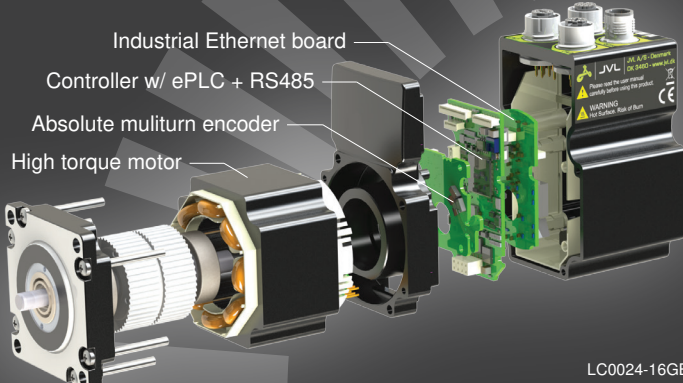
Main motor type	MIS340	MIS341	MIS342	MIS343	MIL34	MIS430	MIS431	MIS432	SMC85	
Holding torque	3.0 [425]	5.1 [722]	9.0 [1274]	12.0 [1699]	2300 N	10.0 [1416]	18.7 [2648]	25.0 [3539]	9 A	Nm [Oz-In]
Resolution	409600	409600	409600	409600	409600	409600	409600	409600	409600	Counts per rev.
Supply voltage Driver	7-72	7-72	7-72	7-72	7-72	7-72	7-72	7-72	7-72	VDC
Supply: Control + I/O	7-28	7-28	7-28	7-28	7-28	7-28	7-28	7-28	7-28	VDC
Max supply current Driver @24 / 48 / 72 VDC	5.0 / 5.2 / 5.4	5.6 / 5.3 / 5.9	6.0 / 5.4 / 6.1	6.3 / 5.7 / 6.6	5.6 / 5.3 / 5.6	6.6	6.6	6.6	6.6	ADC RMS
Nominal speed range	0.01 - 3000	0.01 - 3000	0.01 - 3000	0.01-3000	0.01 - 3000	0.01-3000	0.01-3000	0.01-3000	0.01-3000	RPM
Max mechanical power**	260	288	367	296	288	240	323	245		W
Rotor inertia	1.4 [0.0198]	2.7 [0.0382]	4.0 [0.0564]	5.3 [0.0750]		5.5 [0.0778]	10.9 [0.154]	16.2 [0.2292]		kg-cm <sup>2</sup> /oz-in-s <sup>2</sup>
Flange dimensions	87x87 [3.4x3.4]	87x87 [3.4x3.4]	87x87 [3.4x3.4]	87x87 [3.4x3.4]	87x87 [3.4x3.4]	110x110 [4.3x4.3]	110x110 [4.3x4.3]	110x110 [4.3x4.3]	51x116	mm [Inch]
Length	95.0 [3.74]	125.0 [4.92]	155.0 [6.10]	185.0 [7.28]		145.5 [5.73]	196.5 [7.74]	247.5 [9.74]	117	mm [inch]
Shaft diameter***	Ø9.53 [0.3752]	Ø9.53 [0.3752]	Ø14.0 [0.5512]	Ø14 [0.5512]		Ø19 [0.748]	Ø19 [0.748]	Ø19 [0.748]		mm [inch]
Weight	2.1 [4.5]	3.1 [6.9]	4.3 [9.5]	5.3 [11.7]		5.1 [11.2]	8.9 [19.6]	11.8 [26.0]	0.6 [1.3]	kg [lb]
Protection class	IP42 (IP65 Optional)									

\*\* Peak power @ 72 VDC      \*\*\* Other shaft types also available

## Software integration on all major platforms



JVL A/S  
Bregnerødvej 127  
DK-3460 Birkerød  
Denmark  
Tel. +45 4582 4440  
sales@jvl.dk  
www.jvl.dk





# MAC140-F..

## New Servo Motor - next generation MAC motor - generation 3



Preliminary

JVL is proud to announce a completely new generation of Mini-MAC (50-141 W) servo motors. This new motor family is based on previous designs and customer feedback collected for many years and offers a wide pallet of options and possibilities which makes this product fit into almost any application.

### Key features

- High dynamic servo regulator
- Industrial Ethernets - 6 protocols
- Absolute multiturn encoder unlimited down time (no battery!)
- Safe Torque Off (STO) input
- Wide supply range 7 to 48 VDC
- Very energy efficient
- Brake control (ext. brake)
- 0 – 4000 RPM / 50 – 140 W
- Protection class up to IP67
- Wide program of option modules
- Connectors: M12 industrial



Encompass™  
Product Partner

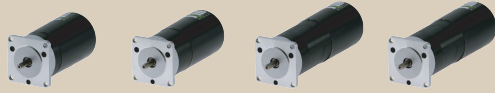
A ROCKWELL AUTOMATION PARTNER



# JVL - your global partner



JVL A/S is a Danish company with subsidiaries in Germany, UK, USA and Turkey. And we have distributors and partner companies in more than 30 countries world-wide – sales and support are always nearby.



Coming soon

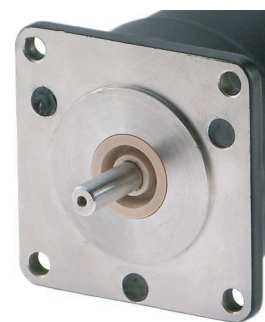
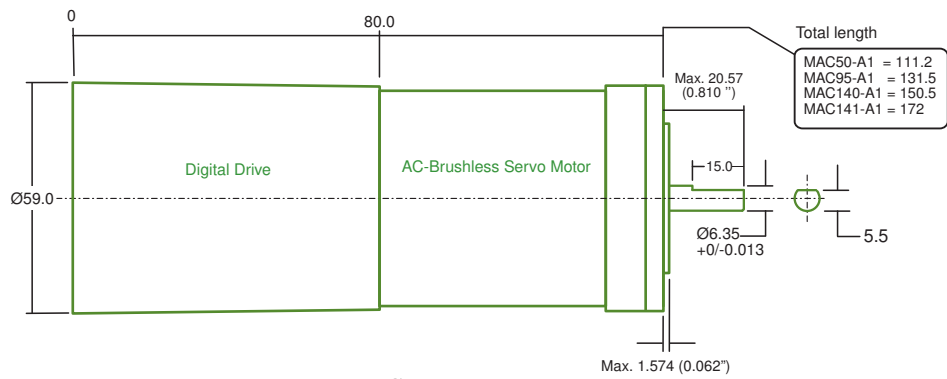
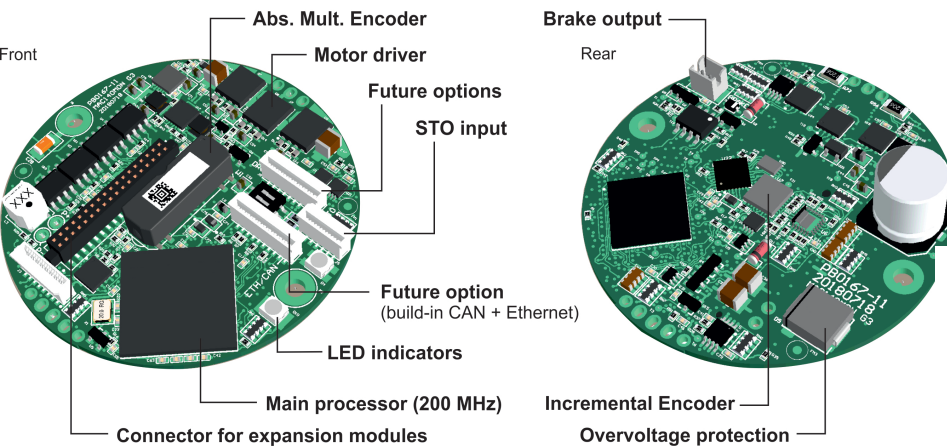
Technical specifications	MAC050	MAC095	MAC140	MAC141	MAC220
Supply voltage	7-48 VDC	7-48 VDC	7-48 VDC	7-48 VDC	7-48 VDC
Speed range (nominal)	0-4000 RPM	0-4000 RPM	0-4000 RPM	0-2700 RPM	0-4000 RPM
Rated power @4000/3000 RPM	46 W	92 W	134 W	134 W	220 W
Cont. torque @T.Amb. -25°C	0.11 Nm	0.22 Nm	0.32 Nm	0.48 Nm	0.52 Nm
Peak torque @T.Amb. -25°C	0.32 Nm	0.62 Nm	0.9 Nm	1.59 Nm	1.5 Nm
Rotor Inertia	0.075 kgcm <sup>2</sup>	0.119 kgcm <sup>2</sup>	0.17 kgcm <sup>2</sup>	0.23 kgcm <sup>2</sup>	0.17 kgcm <sup>2</sup>
Encoder resolution (standard)	4096/8192 CPR				
Absolute Encoder (Turns)	± 18 Bit (2 <sup>18</sup> )				
Flange dimensions	58.7x58.7 mm				

## What is new?

- Absolute multiturn encoder harvesting technology without battery or gear
- Ethernet high performance similar to other MAC motors
- More advanced FOC filter for lower noise and better motor performance
- New Mosfet technology for higher efficiency and cooler motor
- Encoder resolution 8196 CPR. Higher resolutions soon to come
- STO or Brake connector optional

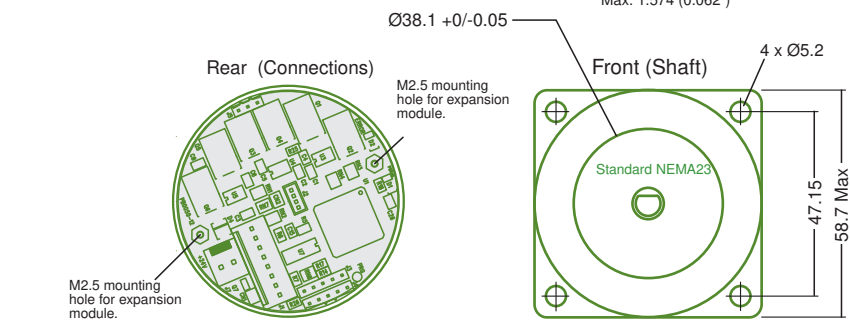
## Power supplies and cables

Power supplies and cables for all types of set-up can be delivered as required. In this way installation is fast and easy for our customers. Please see our complete product line at [www.jvl.dk](http://www.jvl.dk).



## IP67 protection

IP67 versions can also be delivered. They are resistant to rough chemicals and ideal for use in food processing, pharmaceutical, medico and chemical industries. They come with a maintenance free teflon shaft sealing, leak-proof cable entry and stainless steel flange and shaft.



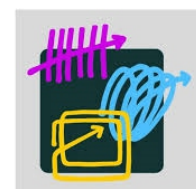
All dimensions in mm



# MAC404 and MAC1004

**Next generation G3 - All-in-one integrated servo motors with closed-loop, ePLC, multiturn encoder and Ethernet.**

**NEW!**



sps ipc drives

JVL A/S is proud to announce complete new generation of 400W and 1000W integrated servo motors called MAC404 and 1004 (G3) This new generation is based on a new control core but with the knowledge from previous designs and customer feedback for many years, and offers a wide pallet of options which makes this product fit into almost any application.

## Key features:

- Lower cost than previous G1 and G2
- Complete new control core
- More compact design
- Industrial Ethernets - 6 protocols
- Ethernet load class III
- Faster Ethernet cycle. Down to 500 $\mu$ s
- Absolute multiturn encoder wo/Batt.
- Safe Torque Off (STO) input
- Electromechanical brake (option)
- Wide supply range 115/230VAC
- Protection class up to IP65
- Connectors: M8/12/16 industrial
- -20 to +70 $^{\circ}$ C Operation temperature\*
- Higher duty cycle
- Higher efficiency
- Faster startup (maximum 0.5\*/2s)
- 64bit position registers
- Prepared for integrated web server
- Prepared for Functional Safety:
  - STO, SS1, SS2, SOS, SLS, SLP, SDI,
  - SSM, SBC, PROFIsafe (Q1-2027).
  - CIP-safety for EthernetIP and SERCOS
  - FSoE for EtherCAT
- Prepared for PROFIdrive (2025 Q2)
- Prepared for Power over Ethernet (PoE)
- Faster Mactalk protocol
- ePLC Prepared multitasking+Int. (2025)
- Prepared for Profibus, CC-link etc.



# JVL – your global partner



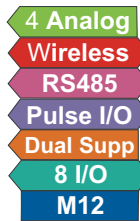
JVL A/S is a Danish company with subsidiaries in Germany, UK, USA and Turkey. And we have distributors and partner companies in more than 30 countries world-wide – sales and support are always nearby.

## Accessories and options:



### Power supplies and cables

Power supplies and cables for all types of set-up can be delivered as required. In this way installation is fast and easy for our customers. Please see our complete product line at [www.jvl.dk](http://www.jvl.dk).



*And more to come soon.....*



### IP 65 protection

IP65 versions can also be delivered. They are resistant to rough chemicals and ideal for use in food processing, pharmaceutical, medico and chemical industries. Come with a maintenance free teflon shaft sealing, leak-proof cable entry and stainless steel flange and shaft.

JVL A/S is a Danish manufacturer founded in 1986 and is the inventor of the integrated servo motor concept. Our focus is on developing state-of-the-art products for motion control. We are proud to be a certified supplier to the aerospace and automotive industries.

We offer two all-in-one ranges: Servo motors from 50 to 4500 W and ServoStep™ motors from 0.18 to 25 Nm. All motors are designed for IIot and are Industry 4.0 ready.

## Software integration on all major platforms



## Canadian Distributor

### SNS Industrial Group

221 Holiday Inn Drive, Unit 102A  
Cambridge Ontario N3C 3T2

[www.snsindustrial.com](http://www.snsindustrial.com)  
226-566-9677  
[Sales@snsindustrial.com](mailto:Sales@snsindustrial.com)





# ServoStep®

**Next generation G3 - All-in-one integrated stepper motors with closed-loop, ePLC, multiturn encoder and Ethernet.**

**NEW!**



**sps**

smart production solutions

33<sup>rd</sup> international exhibition  
for industrial automation

EtherCAT®

ETHERNET  
**POWERLINK**

**PROFI**  
INDUSTRIAL ETHERNET  
**NET**

4 Analog  
Wireless  
RS485  
Pulse I/O  
Dual Supp  
8 I/O  
M12

**SSI**  
SYNCHRONOUS SERIAL INTERFACE

EtherNet/IP™

**CANopen**

**SERCOS**  
the automation bus

**ePLC**

**Modbus**

**RS 485**  
2Mbit



**IO-Link**

**DMX512**



**Modbus**  
RS485/RS422 RTU

*And more to come soon....*

JVL A/S is proud to announce a complete new generation of NEMA17 and 23 integrated steppers - **Generation G3 - SMC67 Controller**

This new generation is based on a new control core but with the knowledge from previous designs and customer feedback for many years, and offers a wide pallet of options which makes this product fit into almost any application.

## Key features:

- Lower cost than previous gen. II
- Complete new control core
- Silent and very smooth operation
- Industrial Ethernets - 6 protocols
- Ethernet load class III
- Faster Ethernet cycle. Down to 500µs
- Closed-loop operation
- Absolute multiturn encoder wo/Batt.
- Safe Torque Off (STO) input
- High resolution 409600 cnt/rev.
- Double shaft
- Speed 0-3000 in 0.01RPM steps
- Electromechanical brake (external)
- Wide supply range 8-72VDC
- Protection class up to IP65
- Connectors: M12 industrial
- -20 to +70°C Operation temperature
- Higher duty cycle
- Higher efficiency
- Faster startup (maximum 0.5\*/2s)
- 64bit position registers
- Prepared for integrated web server
- Prepared for Functional Safety:
  - STO, SS1, SS2, SOS, SLS, SLP, SDI,
  - SSM, SBC, PROFIsafe (Q1-2027).
  - CIP-safety for EthernetIP and SERCOS
  - FSoE for EtherCAT
- Prepared for PROFIdrive (2025 Q2)
- Prepared for Power over Ethernet (PoE)
- Faster Mactalk protocol
- ePLC Prepared multitasking+Int. (2025)
- Prepared for Profibus, CC-link etc.
- Room for large CAM table.

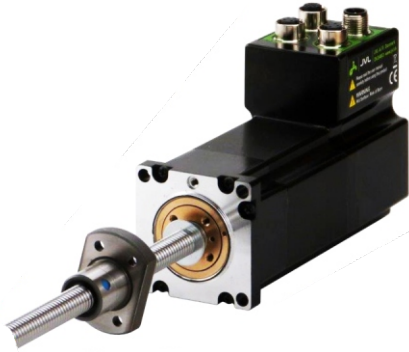


# JVL – your global partner



JVL A/S is a Danish company with subsidiaries in Germany, UK, USA and Turkey. And we have distributors and partner companies in more than 30 countries world-wide – sales and support are always nearby.

## Accessories and options:



### Integrated spindle (MIL23x)

Integrated Linear Stepper Motor. This motor can reduce cost, save space and reduce failure rate due to its simple construction. Captive, Non-captive and external linear with lead screw or rolled ball screw is available.



### Power supplies and cables

Power supplies and cables for all types of set-up can be delivered as required. In this way installation is fast and easy for our customers. Please see our complete product line at [www.jvl.dk](http://www.jvl.dk).



### Electric brake

Optionally an electric brake, type MAB23x for all motors with NEMA 23. It is useful for holding the motor shaft fixed at power off or when the motor is used in vertical applications.



### IP 65 protection

IP65 versions can also be delivered. They are resistant to rough chemicals and ideal for use in food processing, pharmaceutical, medico and chemical industries. Come with a maintenance free teflon shaft sealing, leak-proof cable entry and stainless steel flange and shaft.

JVL A/S is a Danish manufacturer founded in 1986 and is the inventor of the integrated servo motor concept. Our focus is on developing state-of-the-art products for motion control. We are proud to be a certified supplier to the aerospace and automotive industries. We offer two all-in-one ranges: Servo motors from 50 to 4500 W and ServoStep™ motors from 0.18 to 25 Nm. All motors are designed for IIot and are Industry 4.0 ready.

## Software integration on all major platforms



## Canadian Distributor



### SNS Industrial Group

221 Holiday Inn Drive, Unit 102A  
Cambridge Ontario N3C 3T2

[www.snsindustrial.com](http://www.snsindustrial.com)  
226-566-9677  
[Sales@snsindustrial.com](mailto:Sales@snsindustrial.com)

